

13 Chrisevyn Lane  
Phoenixville, PA 19460

16,536 RSF Warehouse

Lease for \$7.50/SF NNN

Sale for \$1,900,000

Available 3/1/2019



## Property Highlights

- Newly constructed in 2006
- 22-26' clearance in warehouse
- Superior split-face block construction
- 24-gauge galvalume roof
- High quality office finishes
- Two separate docks: one drive-in and one load-in
- Close to major roadways



Adam Knox

aknox@geisrealty.com

610 975 4262

Sean Higgins

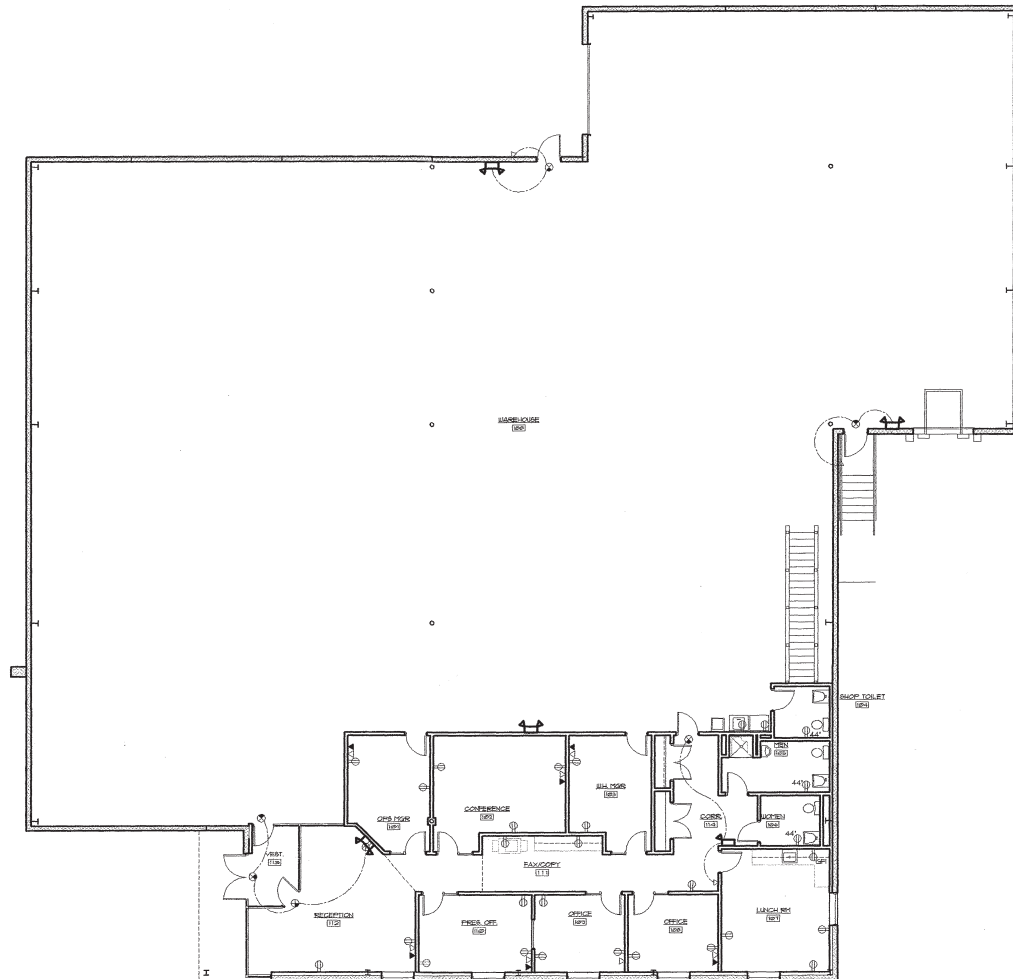
shiggins@geisrealty.com

610 263 2850

996 Old Eagle School Road, Suite 1117, Wayne, PA 19087 610 989 0300 [geisrealty.com](http://geisrealty.com)

NO WARRANTY OR REPRESENTATION, EXPRESS OR IMPLIED, IS MADE AS TO THE ACCURACY OF THE INFORMATION CONTAINED HEREIN, AND THE SAME IS SUBMITTED SUBJECT TO ERRORS, OMISSIONS, CHANGE OF PRICE, RENTAL OR OTHER CONDITIONS, PRIOR SALE, LEASE OR FINANCING, OR WITHDRAWAL WITHOUT NOTICE, AND OF ANY SPECIAL LISTING CONDITIONS IMPOSED BY OUR PRINCIPALS NO WARRANTIES OR REPRESENTATIONS ARE MADE AS TO THE CONDITION OF THE PROPERTY OR ANY HAZARDS CONTAINED THEREIN ARE ANY TO BE IMPLIED.

# 13 Chrisevyn Lane Phoenixville, PA 19460



**Adam Knox**  
aknox@geisrealty.com  
610 975 4262

**Sean Higgins**  
shiggins@geisrealty.com  
610 263 2850

996 Old Eagle School Road, Suite 1117, Wayne, PA 19087 610 989 0300 [geisrealty.com](http://geisrealty.com)

NO WARRANTY OR REPRESENTATION, EXPRESS OR IMPLIED, IS MADE AS TO THE ACCURACY OF THE INFORMATION CONTAINED HEREIN, AND THE SAME IS SUBMITTED SUBJECT TO ERRORS, OMISSIONS, CHANGE OF PRICE, RENTAL OR OTHER CONDITIONS, PRIOR SALE, LEASE OR FINANCING, OR WITHDRAWAL WITHOUT NOTICE, AND OF ANY SPECIAL LISTING CONDITIONS IMPOSED BY OUR PRINCIPALS NO WARRANTIES OR REPRESENTATIONS ARE MADE AS TO THE CONDITION OF THE PROPERTY OR ANY HAZARDS CONTAINED THEREIN ARE ANY TO BE IMPLIED.



13 Chrisevyn Lane  
Phoenixville, PA 19460



Adam Knox  
aknox@geisrealty.com  
610 975 4262

Sean Higgins  
shiggins@geisrealty.com  
610 263 2850

996 Old Eagle School Road, Suite 1117, Wayne, PA 19087 610 989 0300 [geisrealty.com](http://geisrealty.com)

NO WARRANTY OR REPRESENTATION, EXPRESS OR IMPLIED, IS MADE AS TO THE ACCURACY OF THE INFORMATION CONTAINED HEREIN, AND THE SAME IS SUBMITTED SUBJECT TO ERRORS, OMISSIONS, CHANGE OF PRICE, RENTAL OR OTHER CONDITIONS, PRIOR SALE, LEASE OR FINANCING, OR WITHDRAWAL WITHOUT NOTICE, AND OF ANY SPECIAL LISTING CONDITIONS IMPOSED BY OUR PRINCIPALS NO WARRANTIES OR REPRESENTATIONS ARE MADE AS TO THE CONDITION OF THE PROPERTY OR ANY HAZARDS CONTAINED THEREIN ARE ANY TO BE IMPLIED.