

Historic Former Cinnaminson Bank and Trust Company

Located in the heart of Riverton, NJ
Recently renovated

For Sale
asking **\$600,000**



604 Main Street

Riverton, NJ 08077

**Historically certified and fully
renovated 7,000 square foot
building**

- Great opportunity for a number of users including, Event/Catering company, Restaurant, Retail, Creative user or office user.
- Minutes from the Tacony-Palmyra Bridge
- One block from the NJ Transit River Line Light Rail Riverton Stop

Property Highlights

- Four zone HVAC via four new 2 ton rooftop units
- Upgraded 3 Phase, 600 amp electrical services
- 4" water main sprinkler system installed in basement and can be expanded to upper floors
- Zoned Neighborhood business allowing a wide variety of uses



For more information, please contact:

NAI Geis Realty
Group, Inc.

Thomas Bond
tbond@geisrealty.com
(215) 568-1755

Duane Morris Plaza
30 South 17th Street, Suite 810
Philadelphia, PA 19103

(215) 568-7222 Tel
(215) 568-5043 Fax
www.geisrealty.com

No warranty or representation, express or implied, is made as to the accuracy of the information contained herein, and the same is submitted subject to errors, omissions, change of price, rental or other conditions, prior sale, lease or financing, or withdrawal without notice, and of any special listing conditions imposed by our principals no warranties or representations are made as to the condition of the property or any hazards contained therein are any to be implied.

604 Main Street
Riverton, NJ 08077

4,000 SF fully renovated
interior space



Availabilities

- 3,000 square foot first floor
 - 3 unisex bathrooms (2 ADA compliant)
 - warming kitchen
- 1,000 square foot mezzanine
 - 1 unisex bathroom
 - office/conference room space
- 3,000 square foot basement



For more information, please contact:

NAI Geis Realty
Group, Inc.

Thomas Bond
tbond@geisrealty.com
(215) 568-1755

Duane Morris Plaza
30 South 17th Street, Suite 810
Philadelphia, PA 19103

(215) 568-7222 Tel
(215) 568-5043 Fax
www.geisrealty.com

No warranty or representation, express or implied, is made as to the accuracy of the information contained herein, and the same is submitted subject to errors, omissions, change of price, rental or other conditions, prior sale, lease or financing, or withdrawal without notice, and of any special listing conditions imposed by our principals no warranties or representations are made as to the condition of the property or any hazards contained therein are any to be implied.

604 Main Street

Riverton, NJ 08077

Land

Land - 17,859 SF

- Comprised of two separate lots
 - Lot 1 - Building & Parking Lot - 190' x 50'
 - Lot 2 - Additional Parking and/or possible development site - 135' x 60'
- 30 Parking spaces



For more information, please contact:



Thomas Bond
tbond@geisrealty.com
(215) 568-1755

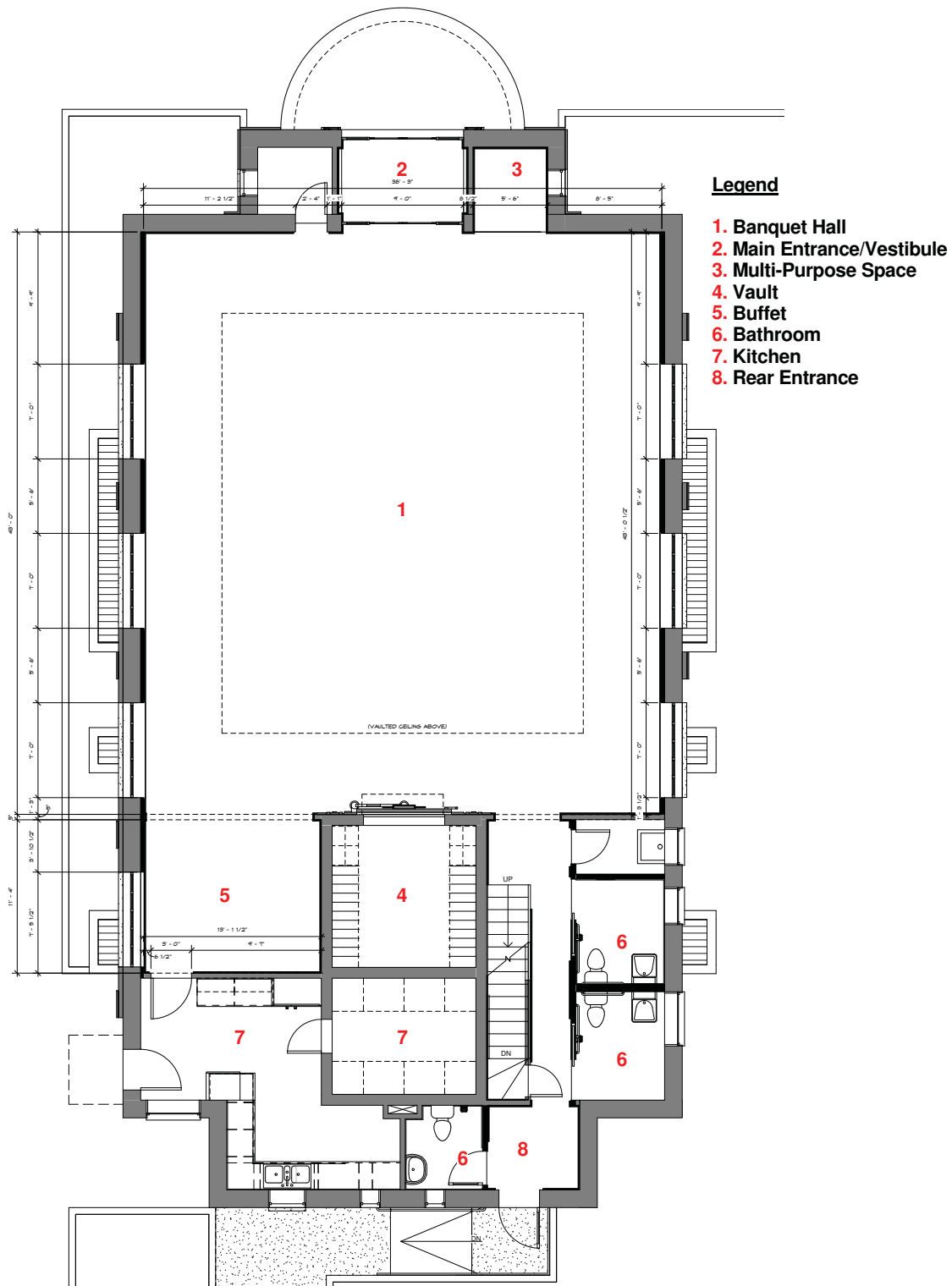
Duane Morris Plaza
30 South 17th Street, Suite 810
Philadelphia, PA 19103
(215) 568-7222 Tel
(215) 568-5043 Fax
www.geisrealty.com

No warranty or representation, express or implied, is made as to the accuracy of the information contained herein, and the same is submitted subject to errors, omissions, change of price, rental or other conditions, prior sale, lease or financing, or withdrawal without notice, and of any special listing conditions imposed by our principals no warranties or representations are made as to the condition of the property or any hazards contained therein are any to be implied.

604 Main Street

Riverton, NJ 08077

Floor Plan



For more information, please contact:



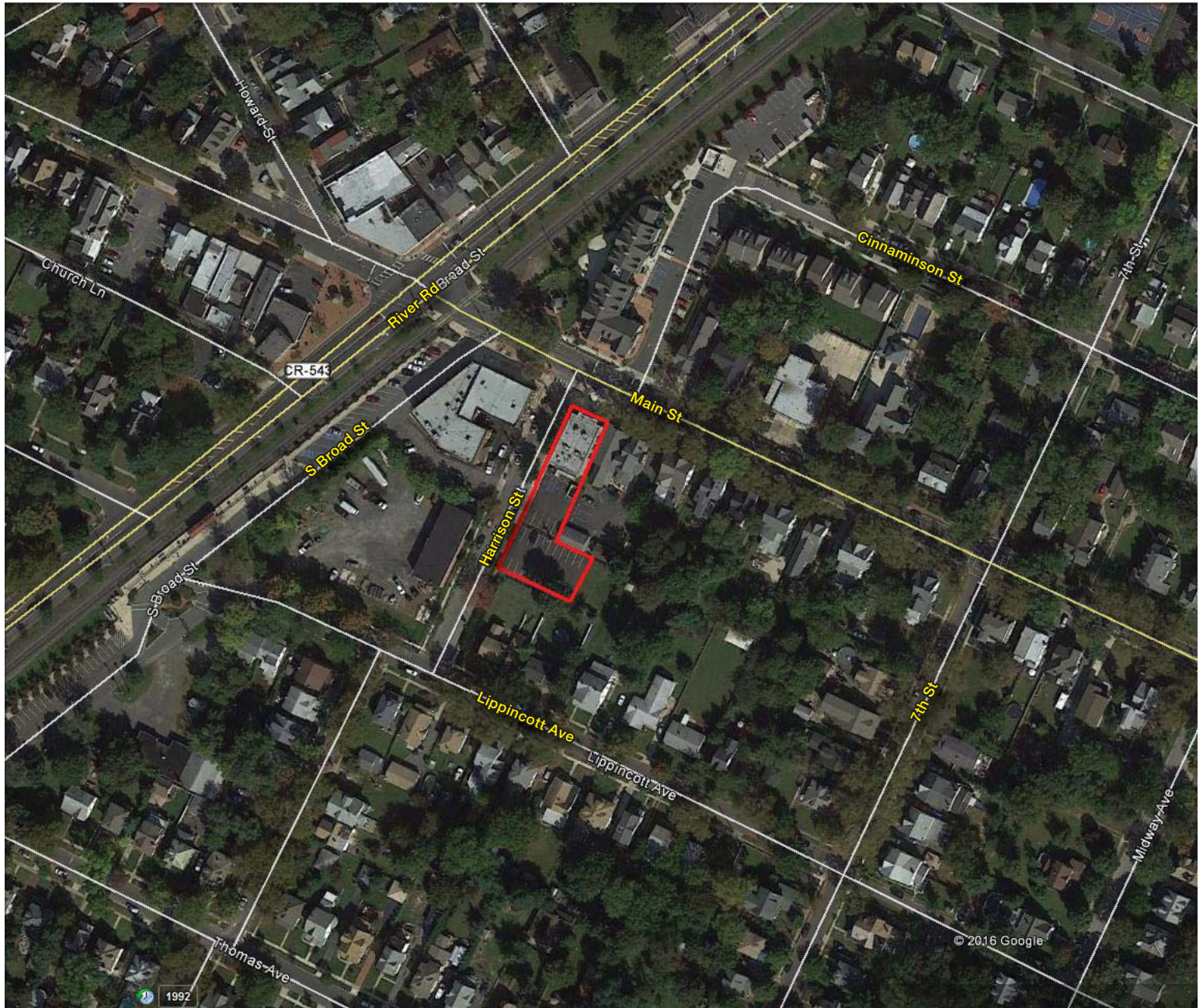
Thomas Bond
tbond@geisrealty.com
(215) 568-1755

Duane Morris Plaza
30 South 17th Street, Suite 810
Philadelphia, PA 19103
(215) 568-7222 Tel
(215) 568-5043 Fax
www.geisrealty.com

604 Main Street

Riverton, NJ 08077

Aerial



For more information, please contact:



Thomas Bond
tbond@geisrealty.com
(215) 568-1755

Duane Morris Plaza
30 South 17th Street, Suite 810
Philadelphia, PA 19103

(215) 568-7222 Tel
(215) 568-5043 Fax
www.geisrealty.com

No warranty or representation, express or implied, is made as to the accuracy of the information contained herein, and the same is submitted subject to errors, omissions, change of price, rental or other conditions, prior sale, lease or financing, or withdrawal without notice, and of any special listing conditions imposed by our principals no warranties or representations are made as to the condition of the property or any hazards contained therein are any to be implied.