

801 Lakeview Drive Suite 305
Blue Bell, PA 19422

14,836 RSF
For Sublease

\$19/SF Net of Electric
One of the Best Sublease Rental Rates in Blue Bell

Term through
October 31, 2021



Plug & Play Space in Class A Building

Furniture Available

Within the Heart of one of
Blue Bell's Finest First Class
Corporate Office Parks

Numerous executive offices,
collaborative work stations
and conference areas with
many upgrades



For more information:

Thomas Bond
tbond@geisrealty.com

Jack Byers
jbyers@geisrealty.com

Sean Higgins
shiggins@geisrealty.com

Duane Morris Plaza // 30 South 17th Street, Suite 210, Philadelphia, PA 19103 // (215) 568-7222 Tel // (215) 568-5043 Fax // geisrealty.com

NO WARRANTY OR REPRESENTATION, EXPRESS OR IMPLIED, IS MADE AS TO THE ACCURACY OF THE INFORMATION CONTAINED HEREIN, AND THE SAME IS SUBMITTED SUBJECT TO ERRORS, OMISSIONS, CHANGE OF PRICE, RENTAL OR OTHER CONDITIONS, PRIOR SALE, LEASE OR FINANCING, OR WITHDRAWAL WITHOUT NOTICE, AND OF ANY SPECIAL LISTING CONDITIONS IMPOSED BY OUR PRINCIPALS NO WARRANTIES OR REPRESENTATIONS ARE MADE AS TO THE CONDITION OF THE PROPERTY OR ANY HAZARDS CONTAINED THEREIN ARE ANY TO BE IMPLIED.

801 Lakeview Drive

Suite 305

Blue Bell, PA 19422

Property Highlights

- Possession: Immediate
- Direct elevator exposure
- Excellent natural light

Numerous Office Park Amenities

- Conferencing facility
- Fitness center
- Café lounge



For more information:

Thomas Bond
tbond@geisrealty.com

Jack Byers
jbyers@geisrealty.com

Sean Higgins
shiggins@geisrealty.com

Duane Morris Plaza // 30 South 17th Street, Suite 210, Philadelphia, PA 19103 // (215) 568-7222 Tel // (215) 568-5043 Fax // geisrealty.com

NO WARRANTY OR REPRESENTATION, EXPRESS OR IMPLIED, IS MADE AS TO THE ACCURACY OF THE INFORMATION CONTAINED HEREIN, AND THE SAME IS SUBMITTED SUBJECT TO ERRORS, OMISSIONS, CHANGE OF PRICE, RENTAL OR OTHER CONDITIONS, PRIOR SALE, LEASE OR FINANCING, OR WITHDRAWAL WITHOUT NOTICE, AND OF ANY SPECIAL LISTING CONDITIONS IMPOSED BY OUR PRINCIPALS NO WARRANTIES OR REPRESENTATIONS ARE MADE AS TO THE CONDITION OF THE PROPERTY OR ANY HAZARDS CONTAINED THEREIN ARE ANY TO BE IMPLIED.

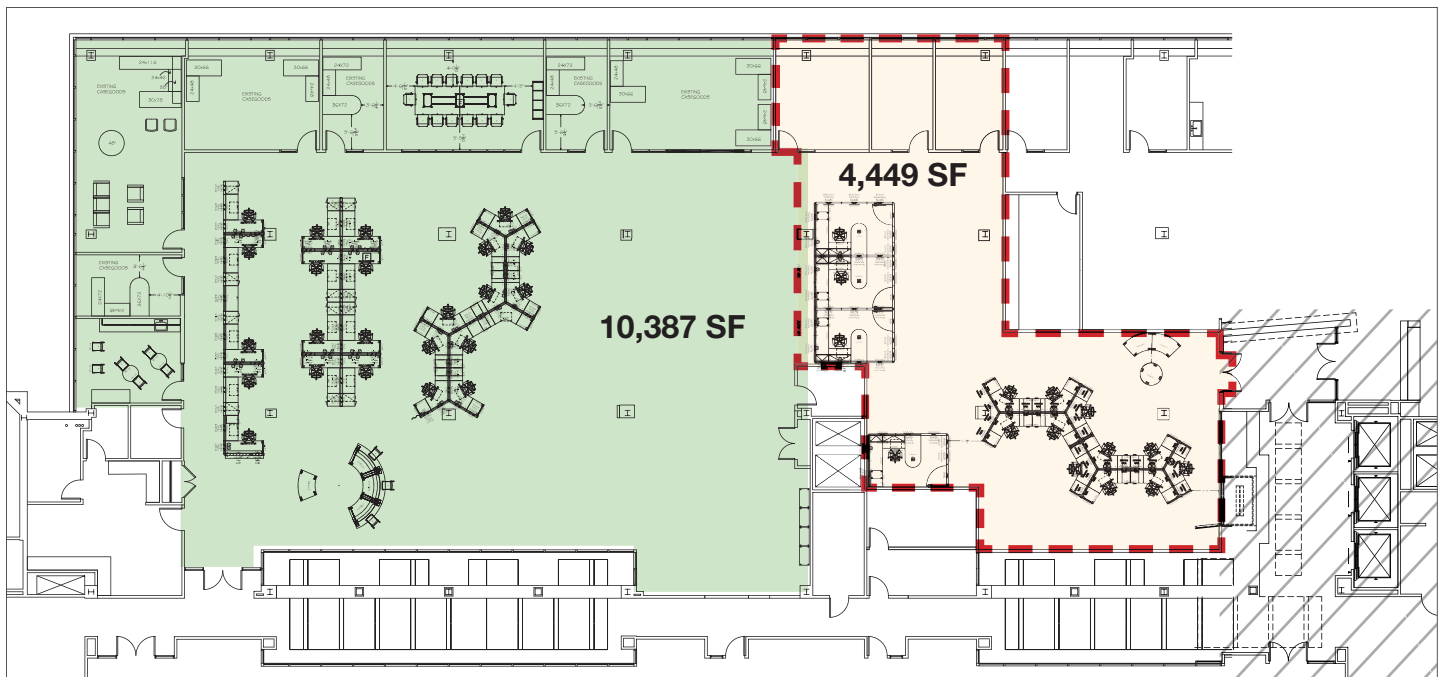
801 Lakeview Drive

Suite 305

Blue Bell, PA 19422

Unique Tech / Branding Firm Space with Collaborative Design Features

Will consider dividing to 4,449 RSF with co-tenancy and ability to share kitchen and other amenities.



- Smaller suite comprising of 4,449 SF, situated directly across from elevators
- Will add galley kitchen
- Total Plug & Play suite



For more information:

Thomas Bond
tbond@geisrealty.com

Jack Byers
jbyers@geisrealty.com

Sean Higgins
shiggins@geisrealty.com

Duane Morris Plaza // 30 South 17th Street, Suite 210, Philadelphia, PA 19103 // (215) 568-7222 Tel // (215) 568-5043 Fax // geisrealty.com

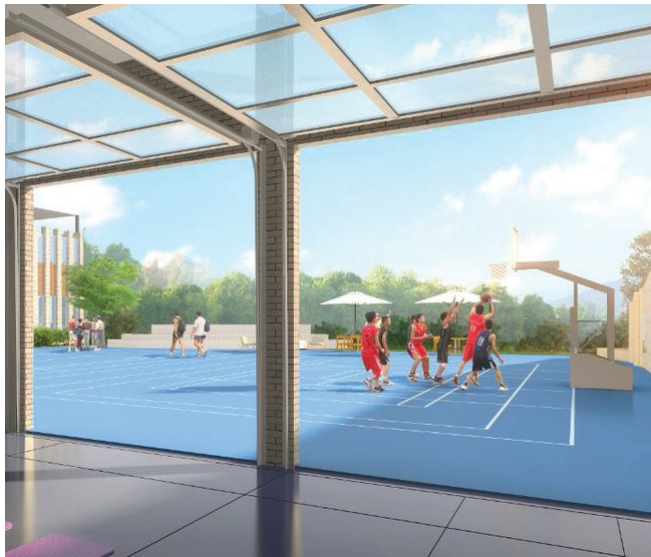
NO WARRANTY OR REPRESENTATION, EXPRESS OR IMPLIED, IS MADE AS TO THE ACCURACY OF THE INFORMATION CONTAINED HEREIN, AND THE SAME IS SUBMITTED SUBJECT TO ERRORS, OMISSIONS, CHANGE OF PRICE, RENTAL OR OTHER CONDITIONS, PRIOR SALE, LEASE OR FINANCING, OR WITHDRAWAL WITHOUT NOTICE, AND OF ANY SPECIAL LISTING CONDITIONS IMPOSED BY OUR PRINCIPALS NO WARRANTIES OR REPRESENTATIONS ARE MADE AS TO THE CONDITION OF THE PROPERTY OR ANY HAZARDS CONTAINED THEREIN ARE ANY TO BE IMPLIED.

801 Lakeview Drive

Suite 305

Blue Bell, PA 19422

Come be Part of Arborcrest Corporate Campus
with First Class Amenities



For more information:

Thomas Bond
tbond@geisrealty.com

Jack Byers
jbyers@geisrealty.com

Sean Higgins
shiggins@geisrealty.com

Duane Morris Plaza // 30 South 17th Street, Suite 210, Philadelphia, PA 19103 // (215) 568-7222 Tel // (215) 568-5043 Fax // geisrealty.com

NO WARRANTY OR REPRESENTATION, EXPRESS OR IMPLIED, IS MADE AS TO THE ACCURACY OF THE INFORMATION CONTAINED HEREIN, AND THE SAME IS SUBMITTED SUBJECT TO ERRORS, OMISSIONS, CHANGE OF PRICE, RENTAL OR OTHER CONDITIONS, PRIOR SALE, LEASE OR FINANCING, OR WITHDRAWAL WITHOUT NOTICE, AND OF ANY SPECIAL LISTING CONDITIONS IMPOSED BY OUR PRINCIPALS NO WARRANTIES OR REPRESENTATIONS ARE MADE AS TO THE CONDITION OF THE PROPERTY OR ANY HAZARDS CONTAINED THEREIN ARE ANY TO BE IMPLIED.