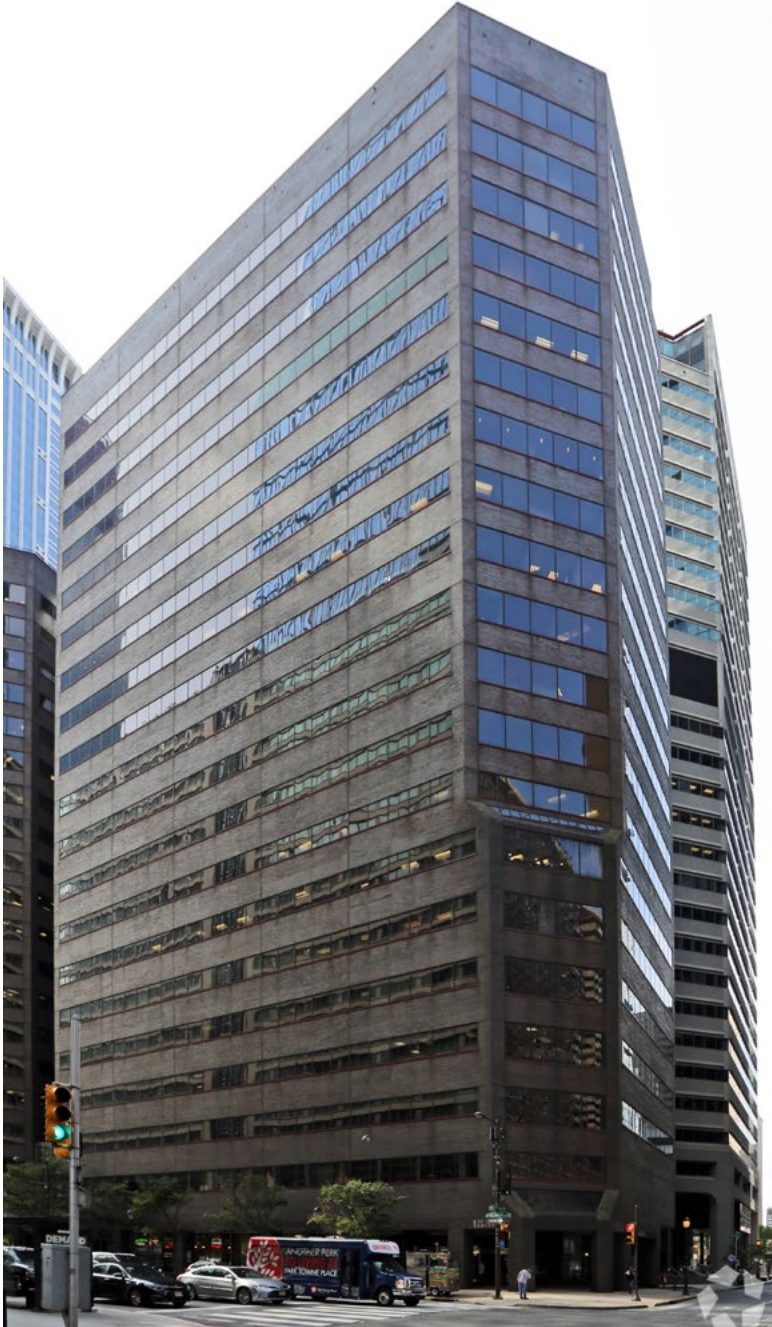
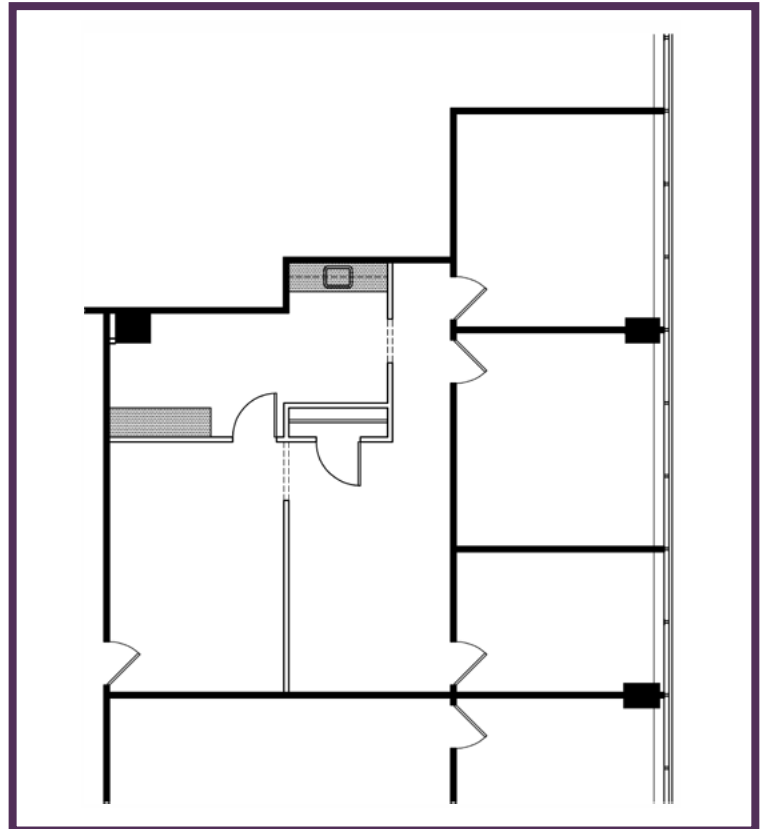


CLASS A OFFICE SUBLEASE AT AN UNDER MARKET RATE



Property Highlights

- 1,732 SF
- Minimum 5 Month Lease Term
- Move-in Ready
- Three Window-Line Offices with Kitchenette
- Below Market Rate: \$21.50 PSF Full Service Gross
- Quick Access to Public Transportation



Contact:

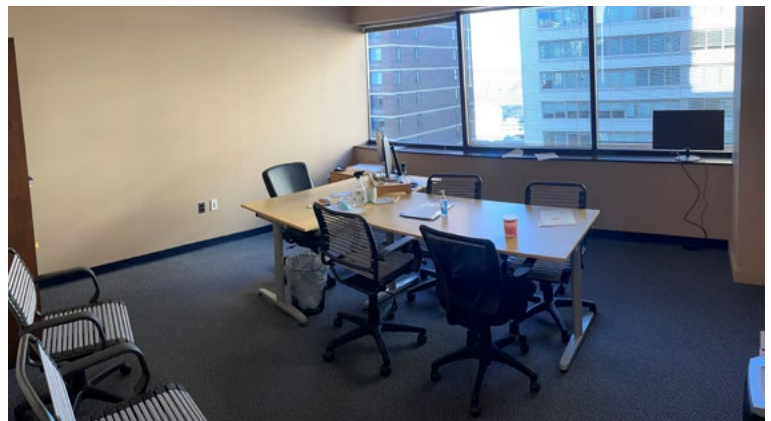
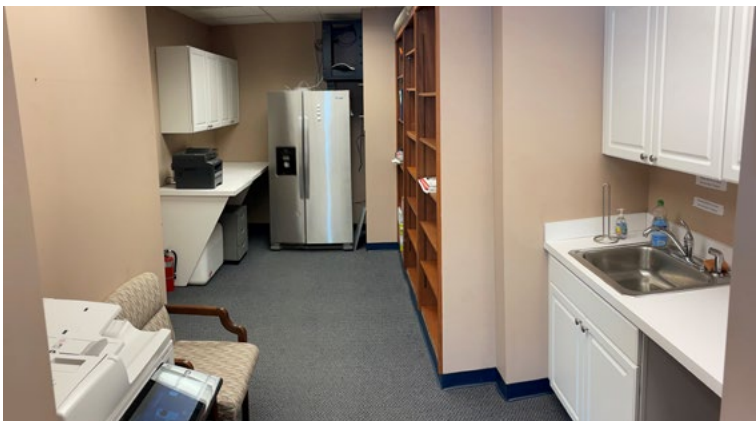
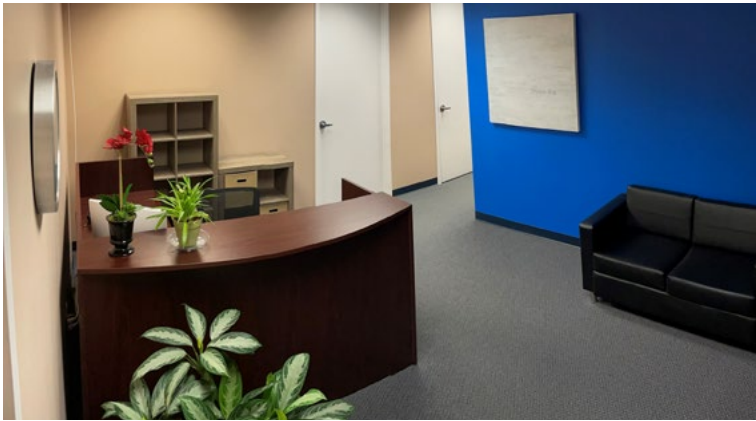
Louis Tonon
Associate
ltonon@geisrealty.com
(215) 568-1590

30 South 17th Street
Suite 210
Philadelphia, PA 19103
(215) 568-7222

www.geisrealty.com

1880 JFK Boulevard 17th Floor
Philadelphia, PA 19103

Interior
Photos



Contact:

Louis Tonon
Associate
ltonon@geisrealty.com
(215) 568-1590

30 South 17th Street
Suite 210
Philadelphia, PA 19103
(215) 568-7222

www.geisrealty.com

No warranty or representation, express or implied, is made as to the accuracy of the information contained herein, and the same is submitted subject to errors, omissions, change of price, rental or other conditions, prior sale, lease or financing, or withdrawal without notice, and of any special listing conditions imposed by our principals no warranties or representations are made as to the condition of the property or any hazards contained therein are any to be implied.