

For Lease

600 Reed Road

Broomall, PA 19008

\$18.50

BEST RENT IN DELAWARE COUNTY



***Fully Furnished 3rd Floor Suite with Upgraded Workstations,
Select Office And Conference Room Furniture***

Turnkey Office/Medical Space Opportunities

1,389 - 6,624 RSF Available

Property Highlights

- Well capitalized ownership
- Easy access to I-476 (Blue Route)
- ADA accessible
- Ample parking
- Prominent signage on Reed Road
- Ownership and management on site

Availability

- 1st Floor
6,624 RSF - can subdivide
- 2nd Floor
3,571 RSF
- 3rd Floor
4,089 RSF

For more information:

Thomas S. Bond

tbond@geisrealty.com

(215) 568-1755

Duane Morris Plaza, 30 South 17th Street, Suite 210, Philadelphia, PA

215 568 7222

geisrealty.com

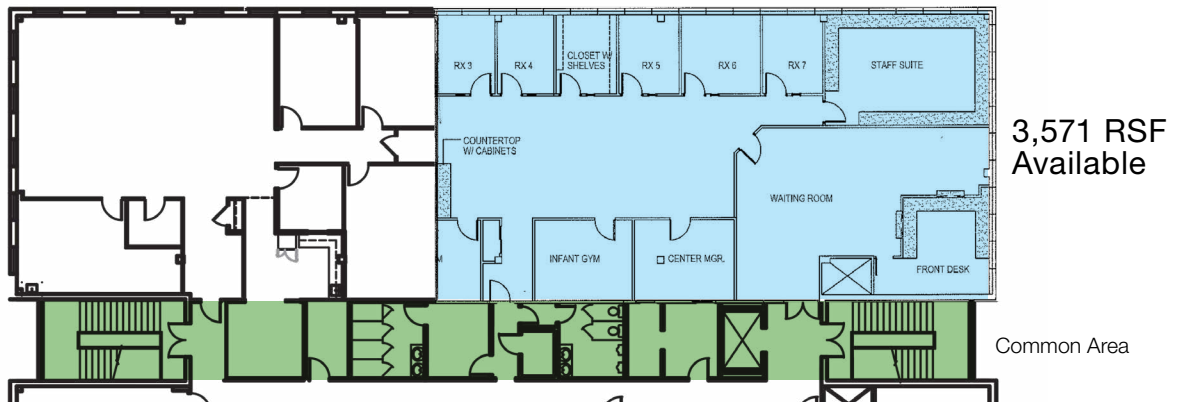
600 Reed Road
Broomall, PA 19008

Office/Medical Space Available

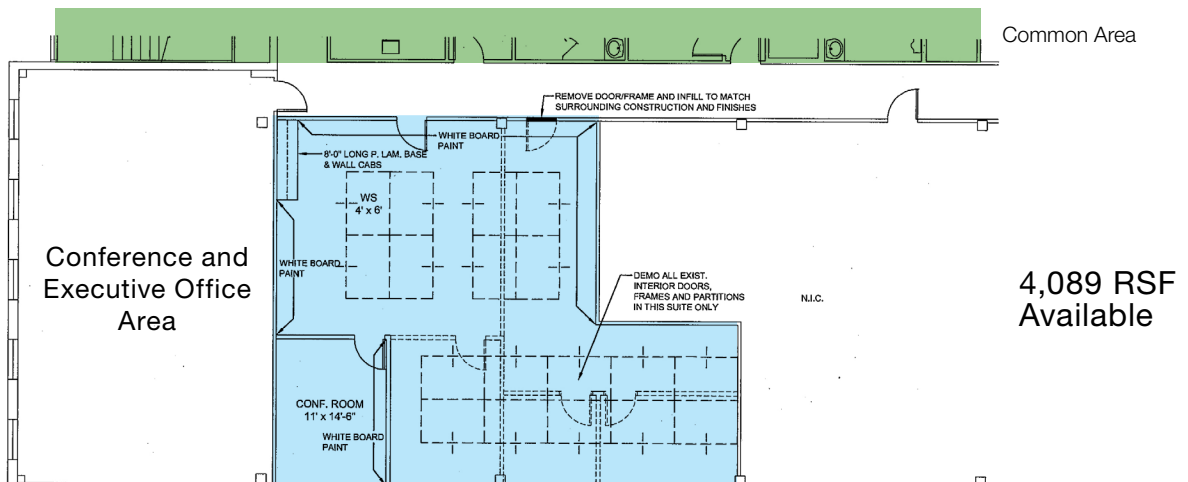
1st Floor



2nd Floor



3rd Floor



For more information:

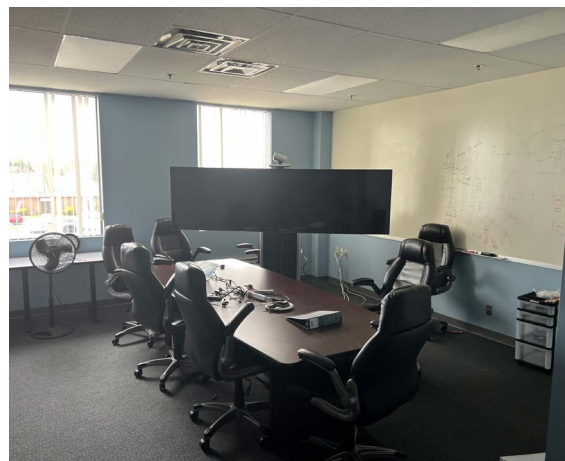
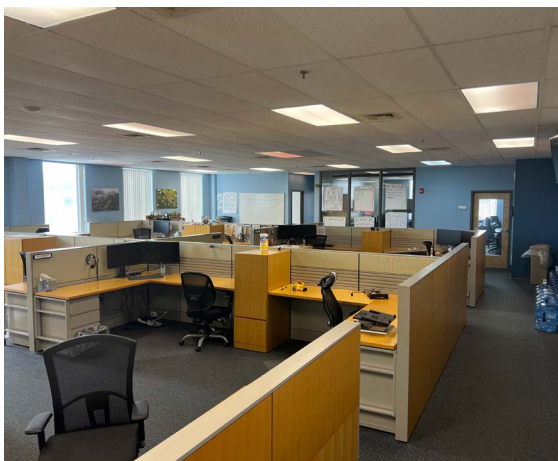
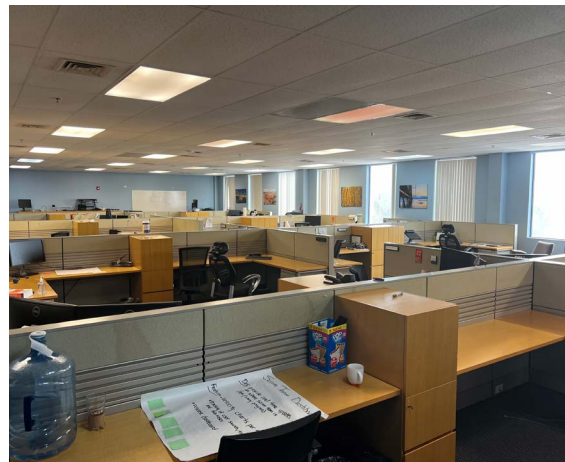
Thomas S. Bond
tbond@geisrealty.com
(215) 568-1755

Duane Morris Plaza // 30 South 17th Street, Suite 210, Philadelphia, PA 19103 // (215) 568-7222 Tel // (215) 568-5043 Fax // geisrealty.com

NO WARRANTY OR REPRESENTATION, EXPRESS OR IMPLIED, IS MADE AS TO THE ACCURACY OF THE INFORMATION CONTAINED HEREIN, AND THE SAME IS SUBMITTED SUBJECT TO ERRORS, OMISSIONS, CHANGE OF PRICE, RENTAL OR OTHER CONDITIONS, PRIOR SALE, LEASE OR FINANCING, OR WITHDRAWAL WITHOUT NOTICE, AND OF ANY SPECIAL LISTING CONDITIONS IMPOSED BY OUR PRINCIPALS NO WARRANTIES OR REPRESENTATIONS ARE MADE AS TO THE CONDITION OF THE PROPERTY OR ANY HAZARDS CONTAINED THEREIN ARE ANY TO BE IMPLIED.

600 Reed Road
Broomall, PA 19008

Office/Medical Space
Available



For more information:

Thomas S. Bond

tbond@geisrealty.com

(215) 568-1755

Duane Morris Plaza // 30 South 17th Street, Suite 210, Philadelphia, PA 19103 // (215) 568-7222 Tel // (215) 568-5043 Fax // geisrealty.com

NO WARRANTY OR REPRESENTATION, EXPRESS OR IMPLIED, IS MADE AS TO THE ACCURACY OF THE INFORMATION CONTAINED HEREIN, AND THE SAME IS SUBMITTED SUBJECT TO ERRORS, OMISSIONS, CHANGE OF PRICE, RENTAL OR OTHER CONDITIONS, PRIOR SALE, LEASE OR FINANCING, OR WITHDRAWAL WITHOUT NOTICE, AND OF ANY SPECIAL LISTING CONDITIONS IMPOSED BY OUR PRINCIPALS NO WARRANTIES OR REPRESENTATIONS ARE MADE AS TO THE CONDITION OF THE PROPERTY OR ANY HAZARDS CONTAINED THEREIN ARE ANY TO BE IMPLIED.